

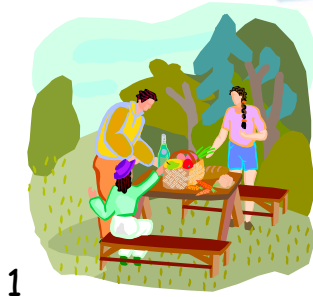
## SOCIAL ENGLISH - TALKING ABOUT YOURSELF

### ASKING ABOUT PLACES

<b>Age group</b>	Adults
<b>Level</b>	0.0 - 0.5
<b>Time needed</b>	50 - 60 min
<b>Learning objective(s)</b>	Asking yes/no questions with be
<b>Key skills</b>	Speaking & Vocabulary

### ASKING ABOUT PLACES

#### IN CONTEXT 5 - 8 min



1



2

Look at the pictures and answer the questions.

Where are they?

- in an office
- in a museum
- in a store
- in a park
- in a church

Where are you?

- at work
- at home
- at a friend's home
- at a restaurant
- at a movie theater

What is it?

Office, home, garden, store, church, beach, castle, movie theater, monument,



1.



2.



3.



4.



5.



6.



7.



8.



9.

# weuspeak

## VOCABULARY 5 - 8 min

Observe & answer the questions

in = inside an area



at = a point on a map



a map



Is he at home?

Yes, he is.



Is he in the museum?

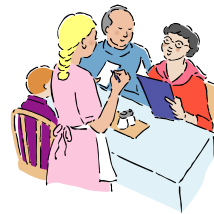
No, he isn't



Is she at a movie theater?



Is he in a church?



Are they at a restaurant?



Is she at a friend's home?



Is he in the office?



Are they in the park?

Is your colleague at work?

Are you in a conference-room?

## ASKING QUESTIONS 12 - 15 min

Read the questions & choose the correct answer.

Example (in green): Am I at the store? No, I am not.

Yes- no questions with be

### Questions

1. **Am** → I at the store?
2. **Are** you at the airport?
3. **Is** he in a museum?
4. **Is** + she at work?
5. **Is** it in the street?
6. **Are** we in a cathedral?
7. **Are** they at home?

### Short answers

- I am  
you are  
he is.  
Yes, she is.  
it is.  
we are.  
they are.
- I am not**  
you are not  
he is not.  
No, she isn't.\*  
it is not.  
we are not.  
they aren't.\*

\*Only use contractions in negative short answers (No, it isn't.) EXCEPT at the first person singular.

You can also use the contractions of the conjugated verb to be in negative or positive sentences (He isn't French. - They're in Mexico.)

### Match the questions and answers

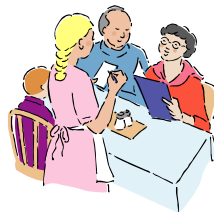
1. Are people in the streets?
2. Is your friend at home?
3. Am I in a medieval cathedral?
4. Is Carol at home?
5. Are you & your family at the restaurant?

- A. No, we aren't
- B. Yes, she is.
- C. No, he isn't.
- D. Yes, they are.
- F. No, you are not.

### Complete



Are \_\_\_\_\_ in the office?  
No, they \_\_\_\_\_



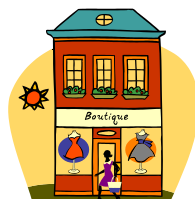
\_\_\_\_\_ she at work?  
Yes, \_\_\_\_\_.



\_\_\_\_\_ in Hawaii?  
No, I am not.



\_\_\_\_\_ in the store?  
\_\_\_\_\_, \_\_\_\_\_



\_\_\_\_\_ a store?  
\_\_\_\_\_, \_\_\_\_\_ is.



\_\_\_\_\_ we at home?  
No, \_\_\_\_\_.

**Complete the questions and write the answer.**

Use a coma "," and a period "."

Examples: Are you and your friend at the theater? No, we are not.

1. \_\_\_\_\_ you in an apartment? No, \_\_\_\_\_.
2. \_\_\_\_\_ it in the city? Yes, \_\_\_\_\_.
3. \_\_\_\_\_ you and your instructor in a conference-room? No, \_\_\_\_\_.
4. \_\_\_\_\_ your boss in the office? Yes, \_\_\_\_\_.
5. \_\_\_\_\_ your colleagues with you? Yes, \_\_\_\_\_.
6. \_\_\_\_\_ Seoul in Japan? No, \_\_\_\_\_.
7. \_\_\_\_\_ I at church? No, \_\_\_\_\_.

## WRITING 5-8 min

Write 3 yes-no questions. Use the words:

am - in - Moscow, Russia - you - I - is - my teacher - at - home - Time Square - the museum - airport - office - it - work - are

- 1.
- 2.
- 3.

**Listen to your instructor answer.**



You are lost in Florence, Italy.

Ask your instructor yes-no questions to find the monument where you are at. (your teacher selects one place on the map.)

## FLORENCE, ITALY



### Places & Monuments

Dome

Football field / Stadium

Palace

Basilica Ste Mary of the Holy Spirit

Basilica of the Most Holy Annunciation

Uffizi Gallery

**QUIZ 8-10 min**

**Select the correct phrase**

text

Answers:

WOOSPEAK  
53 rue Roger Simon - 77260 REUIL EN BRIE  
Tél : 09 70 46 88 22 Fax : 01 80 82 60 02  
Site Web : [www.woospeak.fr](http://www.woospeak.fr) Email : [formation@woospeak.com](mailto:formation@woospeak.com)  
S.A.R.L. Au capital de 42000 € - RCS MEAUX B 491173316- NAF 7022Z - N°TVA INTRA FR 41491173316